

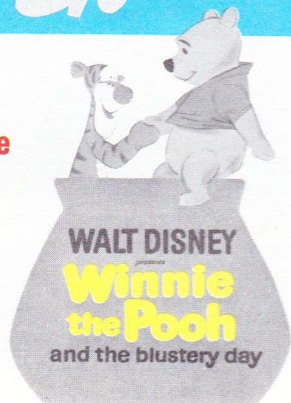
THE HORSE IN THE GRAY FLANNEL SUIT

Watch for these

at

a theatre

near you!



©Walt Disney Productions

FALL/WINTER '68

Welcome to Disneyland

All of us in the Magic Kingdom hope that your visit today will be a happy and memorable one. We also hope that this booklet will assist you in planning your Day at Disneyland as well as providing information regarding Dining facilities, Merchandise locations, Entertainment attractions, etc. If there is something you cannot find in this booklet or you desire additional information or guidance, just ask any Disneylander . . . we would be very pleased to assist you.

Have a happy day and come see us again soon.



Table of Contents

	Page
General Information	2-3
The A-B-C's of Ticket Books	4
Guided Tour Information	4
Disneyland's Adventures and Attractions	5-9
Map of Disneyland	10-11
Main Street, U.S.A.	12
Tomorrowland	13
Fantasyland	14
Frontierland	15
New Orleans Square	16
Adventureland	17
Food and Refreshments	18-20
Shops and Stores	21-24
Free Shows and Exhibits	25
Your Entertainment Calendar	26-29

General Information

General information about Disneyland may be obtained at City Hall, on the left side of Town Square as you enter the Magic Kingdom. As you explore the Park, feel free to ask any employee for assistance.

Information about other Southern California recreational attractions and public transportation schedules may be obtained at Carefree Corner on Main Street, U.S.A. Sponsored by INA, this also is Disneyland's official Guest Registration Center.

LOST AND FOUND

Lost and found facilities are maintained in the Global Van Lines Building, between the Fire Station and Emporium, on Town Square, Main Street, U.S.A.

PUBLIC TELEPHONES

Public telephones are located throughout Disneyland. Ask any Disneylander for directions.

LOCKER SERVICE

Facilities for checking purchases and garments are located in the Global Van Lines Building on Town Square, next to the Fire Station on Main Street, U.S.A. Locker service also is provided at the bus stop area just outside the Disneyland Main Entrance. Lockers large enough for suitcases are located near the tram and bus stations, west of the Main Entrance.

POSTAGE STAMPS AND MAIL SERVICE

Stamps are available in vending machines located in each land, and at the Hallmark Communication Center on Main Street. Mail boxes for your letters and cards are located throughout Disneyland, with regular pick up for mailing out of the United States Post Office in Anaheim. There is no United States Post Office within Disneyland.

LOST CHILDREN

Facilities for the care of lost children are maintained at the end of East Plaza Street, off Main Street, U.S.A. The matron in charge will assist you.

BABY STATION

The Baby Station is located adjacent to the First Aid Center on East Plaza Street. Facilities are provided for changing infants, preparing formulas and warming bottles. Sorry, baby-sitting is not available.

SECURITY

In most areas of the Park, Disneyland Security can be recognized by the theme area dress. If you need assistance, ask any Disneylander.

STROLLERS AND WHEEL CHAIRS

Strollers and wheel chairs are available for your use in Disneyland. They can be obtained for a nominal rental, at the right side of the area just inside the Main Gate turnstiles.

PET CARE

You may leave your pet in an airy, individual enclosure at a cost of only 50¢ for the entire day. This charge includes a choice of Kal Kan pet food. This facility, sponsored by Kal Kan, is located to the right of the Main Gate Ticket Booths. Sorry, dogs cannot be left overnight.

BANKING SERVICES

The Bank of America, located across Town Square from the City Hall, provides complete banking facilities. Banking hours are 10:00 a.m. to 4:00 p.m. every day Disneyland is open (open 'til 6:00 p.m. on Thursdays). Check cashing, for the amount of purchase or up to \$10 in cash with proper identification, is available after 4:00 p.m. at the "Great Moments with Mr. Lincoln" ticket booth, located on Town Square.

BANKAMERICARD

Your BankAmericard is accepted in most Disneyland shops, stores and restaurants.

FIRST AID

Registered nurses are on duty at all times in the First Aid Center, at the end of East Plaza Street, just off Main Street, U.S.A.

PARK OPERATING HOURS

Effective Monday, September 16, Disneyland will be closed on Mondays and Tuesdays during the Fall, Winter and Spring period, with the exception of the Christmas holiday and Easter holiday season. Open Wednesday-Friday 10 a.m. 'til 6 p.m. Open Saturday and Sunday 9 a.m. 'til 7 p.m.

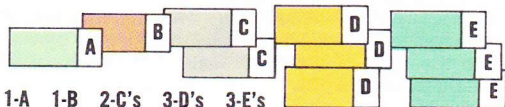
WHEN LEAVING DISNEYLAND

If you wish to return during regular operating hours today, have your hand stamped at the exit gate before you leave the Park, or at the Disneyland Hotel Monorail Station exit.

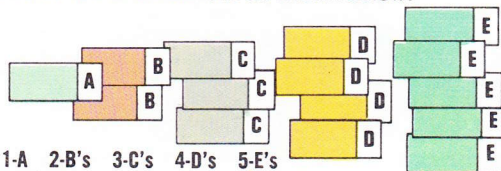
the A-B-C's etc. of Disneyland Ticket Books

Disneyland Ticket Books are a most convenient way to enjoy the Magic Kingdom. Both the Big 10 and Deluxe 15 Ticket Books include admission to Disneyland and a selection of adventures and attractions on an "A," "B," "C," "D" and "E" ticket basis.

THE BIG 10 Ticket Book includes Admission to the Park and a selection of attractions as shown below:



THE DELUXE 15 Ticket Book includes Admission to the Park and a selection of attractions as shown below:



If you have already purchased a general admission ticket, or if you wish to enjoy additional adventures inside the Park, you may buy a 10-adventure book (1A, 1B, 2C, 3D, 3E) or a 5-adventure book (5E's) for \$3.00 at any central ticket booth inside the Park. Either book may be used by anyone regardless of age.

Price subject to change without notice.

Guided Tour Information

The popular Guided Tour is especially recommended for "first-time guests." Visitors are taken on an exciting tour of Disneyland by a charming Guide who tells the fascinating story of the Magic Kingdom's history and growth. The Guided Tour includes admission to Disneyland and a selection of six of the Park's popular attractions.

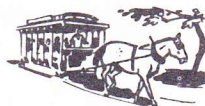
If you already have purchased a General Admission ticket, you may buy a Guided Tour Ticket at the ticket booth adjacent to "Great Moments with Mr. Lincoln." Tour tickets, minus Main Gate admission, are \$3.00 for adults and \$2.75 for children.

Adventures and Attractions

A coupon or 10c

MAIN STREET HORSE CARS (Main Street)

Board a horse-drawn trolley, as it travels down the main street of 60 years ago.



HORSELESS CARRIAGE (Main Street)

A trip down Main Street aboard a replica of America's classic autos.

OMNIBUS (Main Street)

Ride to the entrance of the four "lands" on a double-decker bus.



FIRE ENGINE (Main Street)

"Answer the alarm" in Disneyland's very own fire wagon.

SURREY (Main Street)

Travel down Main Street in an elegant "surrey with the fringe on top."



KING ARTHUR CARROUSEL (Fantasyland)

Ride to the land of fantasy on one of the Carrousel's 72 prancing steeds.

B coupon or 25c

MAIN STREET CINEMA (Main Street)

Enjoy the greats of the silent screen era.





MOTOR BOAT CRUISE (Fantasyland)
Guide your motorboat through treacherous rapids and tricky currents.

CASEY JR. CIRCUS TRAIN (Fantasyland)
The bright, gay circus train who "knew he could," travels a scenic route.



SWISS FAMILY TREEHOUSE (Adventureland) See the Swiss Family Robinson's tree-top home and enjoy an aerial view of Disneyland.

SLEEPING BEAUTY CASTLE (Fantasyland)
See diorama scenes from the popular Walt Disney movie, "Sleeping Beauty."



C coupon or 35c

FANTASYLAND THEATRE (Fantasyland)
View highlights of Disney movies.



MIKE FINK KEEL BOATS (Frontierland)
A backwoods water journey to adventure, on the Rivers of America.

RICHFIELD'S AUTOPIAS (Fantasyland, Tomorrowland) Youngsters can navigate these freeways of the future.



SHOOTING GALLERIES (Frontierland, Adventureland) Test your sharpshooting skills at still and moving targets.

PETER PAN FLIGHT (Fantasyland)
Fly over moonlit London and on to Never-Never Land aboard a pirate galleon.



DUMBO FLYING ELEPHANTS (Fantasyland)
Soar high over Fantasyland aboard the elephant with aerodynamic ears.

MR. TOAD'S WILD RIDE (Fantasyland)
A hilarious ride through old London.



SNOW WHITE'S ADVENTURES (Fantasyland) Travel through the Dark Forest to the Seven Dwarfs' Diamond Mine.

ALICE IN WONDERLAND (Fantasyland)
Relive the fantastic adventures of Alice.



MAD TEA PARTY (Fantasyland)
Whirl and twirl in the Mad Hatter's wildly spinning cups and saucers.

GREAT MOMENTS WITH MR. LINCOLN
presented by
LINCOLN SAVINGS & LOAN ASSOCIATION
(Main Street)

Mr. Lincoln "comes to life" in this world-acclaimed attraction. Young people, up to 17 years old, receive a complimentary ticket with the purchase of a Disneyland Ticket Book.



D coupon or 60c

GOODYEAR PEOPLEMOVER (Tomorrowland)
Travel throughout Tomorrowland and get an "inside" glimpse of each attraction.





MCDONNELL DOUGLAS FLIGHT TO THE MOON (Tomorrowland) Take a journey to the Moon and visit Mission Control.

INDIAN WAR CANOES (Frontierland)
Row your own war canoe under the eye of a real Indian Guide.



STORYBOOK LAND CANAL BOATS (Fantasyland)
View the World of Fairy Tales.



SKYWAY (Tomorrowland, Fantasyland)
View the entire Magic Kingdom from new four-seat skyway buckets.



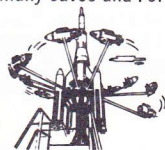
SANTA FE & DISNEYLAND RAILROAD (Main Street, Frontierland and Tomorrowland) All aboard for a circular tour of Disneyland.



TOM SAWYER ISLAND RAFTS (Frontierland) Explore Tom Sawyer Island, with its many caves and Fort Wilderness.



ROCKET JETS (Tomorrowland)
Pilot a high-flying jet to Disneyland's outer space.



coupon or 75c (adults)
(children 65c)

COLUMBIA SAILING SHIP (Frontierland)
Cruise on a replica of the first American ship to circle the globe.



PACK MULES (Frontierland)
See Nature's Wonderland from the back of a sturdy pack mule.

JUNGLE RIVER CRUISE (Adventureland)
Travel through tropical jungles and exotic areas of the world on a jungle boat.



MATTERHORN BOBSLEDS (Tomorrowland)
Race down and around "snow-covered" slopes, in a thrilling bobsled run.

ENCHANTED TIKI ROOM presented by UNITED AIR LINES (Adventureland)
A Polynesian Paradise, where 225 birds, flowers and tropical tikis entertain.



SUBMARINE VOYAGE (Tomorrowland)
Journey through "liquid space" on an exciting undersea cruise to the North Pole.

"IT'S A SMALL WORLD" presented by BANK OF AMERICA (Fantasyland)
Join the happiest crew that ever sailed around the world.

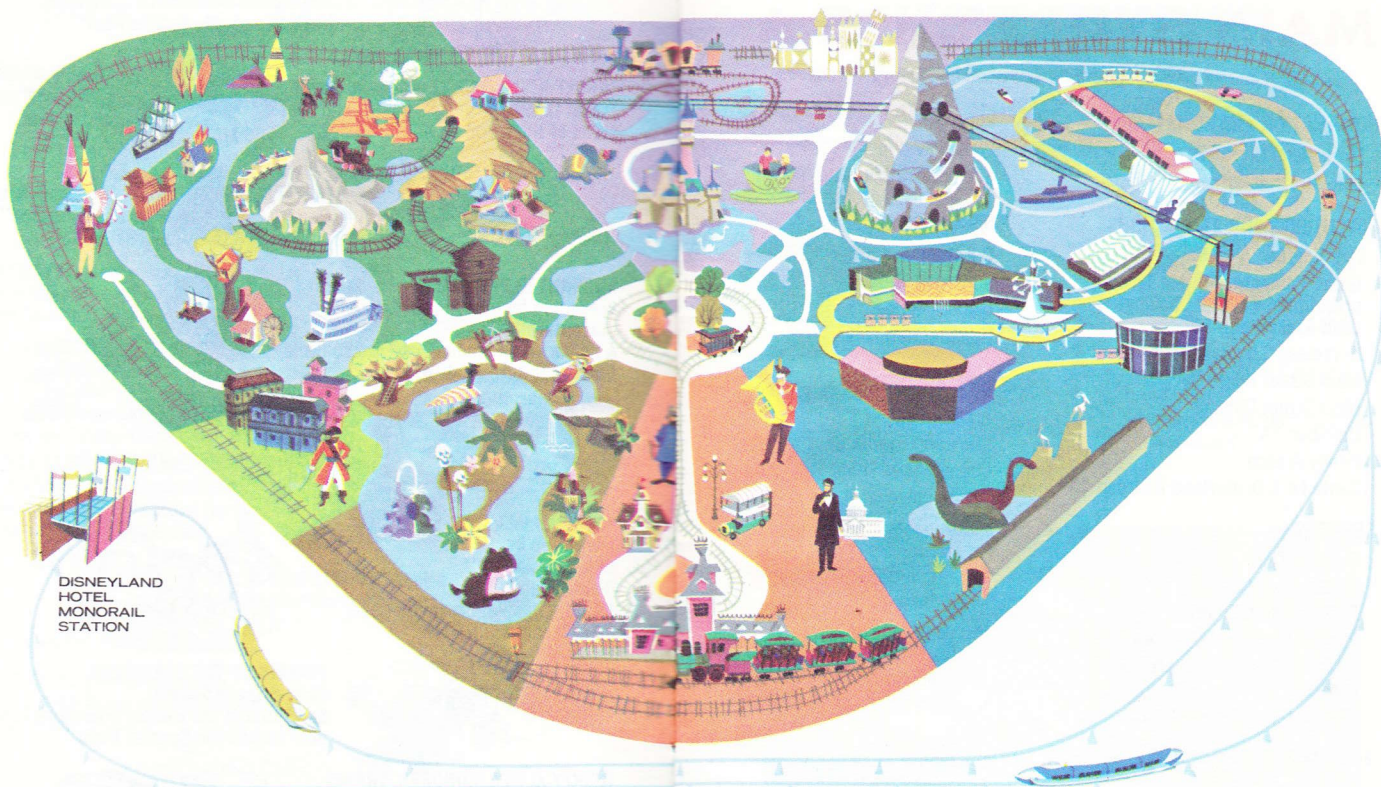


PIRATES OF THE CARIBBEAN (New Orleans Square)
Sail through the wildest adventure that ever rocked the Spanish Main.

DISNEY-ALWEG MONORAIL TRAINS (Tomorrowland)
Circle above and around Disneyland on the transportation system of tomorrow.



MARK TWAIN STEAMBOAT (Frontierland)
Ride the gleaming sternwheeler, as it travels around the Rivers of America.



DISNEYLAND
HOTEL
MONORAIL
STATION

ENTRANCE

FRONTIERLAND

NEW ORLEANS SQUARE

ADVENTURELAND

FANTASYLAND

TOMORROWLAND

MAIN STREET, U.S.A.

©1968 Walt Disney Productions

MAIN STREET, U.S.A.

Letters in quotes by each adventure and attraction show ticket used.

INFORMATION AND ASSISTANCE

Disneyland City Hall
INA Carefree Corner

ADVENTURES AND ATTRACTIONS

Fire Engine "A"
Great Moments with Mr. Lincoln
presented by Lincoln Savings &
Loan Association "C"
Horseless Carriage "A"
Main Street Horse Cars "A"
Main Street Cinema "B"
Omnibus "A"
Penny Arcade
Santa Fe & Disneyland Railroad "D"

SERVICES

Baby Station
Bank of America
Eastman Kodak Exhibit
First Aid and Lost Children
Global's Storage Lockers and
Lost and Found
Strollers and Wheel Chairs

FOOD AND REFRESHMENTS

Carnation Ice Cream Parlor
Carnation Plaza Gardens
Coke Refreshment Corner
Hills Bros. Coffee House
and Garden

Plaza Inn
Plaza Pavilion
Sunkist Citrus House

FREE EXHIBITS

C & H Sugar Corner
Sunsweet Growers
Market House
Upjohn Pharmacy

SHOPS AND STORES

Art Festival
Book and Candle Shop
Camera Shop (film)
Candy Palace
China Shop
Crystal Arcade
Emporium (film)
Flower Market
Hallmark Communication
Center
Jewelry Store
Mad Hatter Shop
Magic Shop
Silhouette Studio
Souvenir Stands
Timex Watches
Tobacco Shop
Wonderland Music Shop

TOMORROWLAND

Letters in quotes by each adventure and attraction show ticket used.

ADVENTURES AND ATTRACTIONS

Disneyland Alweg Monorail Trains "E"
Goodyear PeopleMover "D"
Matterhorn Bobsleds "E"
McDonnell Douglas Flight
to the Moon "D"
Richfield Autopias "C"
Rocket Jets "D"
Santa Fe & Disneyland Railroad "D"
Submarine Voyage "E"

SHOPS AND STORES

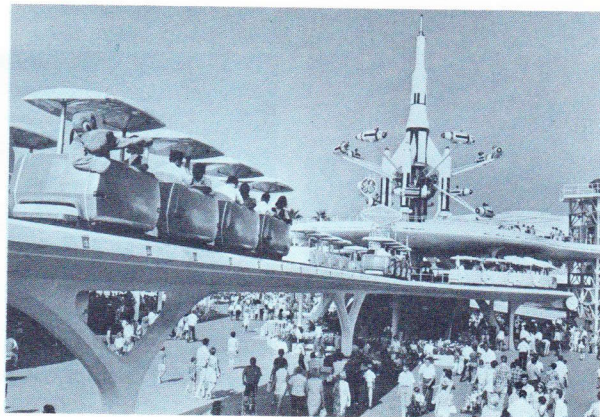
Character Corner
Mad Hatter Shop
Souvenir Stand

FREE ENTERTAINMENT AND EXHIBITS

Bell Telephone Circle
Coca-Cola Tomorrowland
Terrace
General Electric Carousel
of Progress
Monsanto's Adventure thru
Inner Space

FOOD AND REFRESHMENTS

Coca-Cola Tomorrowland Terrace
The Space Bar



FANTASYLAND

Letters in quotes by each adventure and attraction show ticket used.

ADVENTURES AND ATTRACTIONS

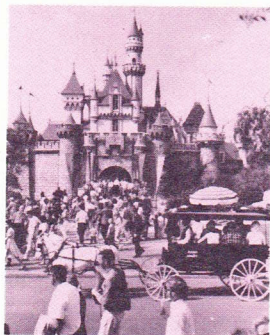
Alice in Wonderland "C"
Casey Jr. Circus Train "B"
Dumbo Flying Elephants "C"
Fantasyland Theatre "C"
"It's a Small World" "E"
presented by Bank of America
King Arthur Carrousel "A"
Mad Tea Party "C"
Motor Boat Cruise "B"
Mr. Toad's Wild Ride "C"
Peter Pan Flight "C"
Skyway to Tomorrowland "D"
Sleeping Beauty Castle "B"
Snow White's Adventures "C"
Storybook Land Canal Boats "D"

FOOD AND REFRESHMENTS

Character Food Stands
Chicken of the Sea
Pirate Ship Restaurant
Welch's Grape Juice Bar

SHOPS AND STORES

Arts and Crafts
Caricatures
Castle Candy Shoppe
Fantasy Gift Fair
Glassblower
Mad Hatter
Merlin's Magic Shop (film)
Souvenir Stands (film)
Tinkerbell Toy Store



Frontierland

Letters in quotes by each adventure and attraction show ticket used.

ADVENTURES AND ATTRACTIONS

Columbia Museum "B"
(Winter Only)
Columbia Sailing Ship "E"
Indian War Canoes "D"
Mark Twain Steamboat "E"
Mike Fink Keel Boats "C"
Mine Train Ride "D"
Pack Mules "E"
Santa Fe & Disneyland Railroad "D"
Shooting Gallery "C"
Tom Sawyer Island Rafts "D"

FOOD AND REFRESHMENTS

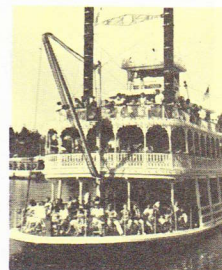
Aunt Jemima's Kitchen
Casa de Fritos
Fort Wilderness Snack Bar
Indian Village (Weekends Only)
Oaks Tavern
Pepsi-Cola Golden Horseshoe

SHOPS AND STORES

Davy Crockett Arcade
Frontier Print Shop
Frontier Rock Shop
Frontier Trading Post (film)
Frontierland Camera Shop (film)
Frontierland Hats
Indian Trading Post (film)
Mexican Imports
Pendleton Woolen Mills Store
Souvenir Stand (film)

FREE SHOWS AND EXHIBITS

Frontierland Arcade Gun
Collection
Pepsi-Cola Golden
Horseshoe Revue



New Orleans Square

Letters in quotes by each adventure and attraction show ticket used.

ADVENTURES AND ATTRACTIONS

Pirates Arcade Museum
Pirates of the Caribbean "E"
Santa Fe & Disneyland Railroad "D"

FOOD AND REFRESHMENTS

The Blue Bayou Restaurant
The Creole Cafe
The French Market
The Mint Julep Bar
Royal Street Veranda

SHOPS AND STORES

Bookstand
Candy Cart
Cristal d'Orleans
Laffite's Silver Shop
Le Forgeron
Le Gourmet
Marche aux Fleurs
Mlle. Antoinette's Parfumerie
One-Of-A-Kind
Portrait Artist



Adventureland

Letters in quotes by each adventure and attraction show ticket used.

ADVENTURES AND ATTRACTIONS

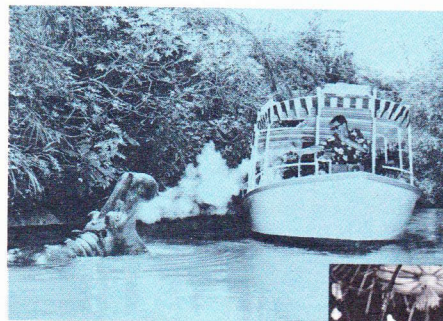
Big Game Safari "C"
Jungle River Cruise "E"
Shooting Gallery
Swiss Family Treehouse "B"
United Air Lines Enchanted
Tiki Room "E"

FOOD AND REFRESHMENTS

Sunkist, "I Presume"
Tahitian Terrace
Tiki Juice Bar

SHOPS AND STORES

Adventureland Bazaar
Adventureland Traders
Far East Imports
Guatemalan Weavers
Magic Carpet
Tropical Imports — Film



Food and Refreshments

Disneyland has a large variety of refreshment centers. In the Magic Kingdom you will discover a menu to please every palate and pocketbook.

MAIN STREET, U.S.A.

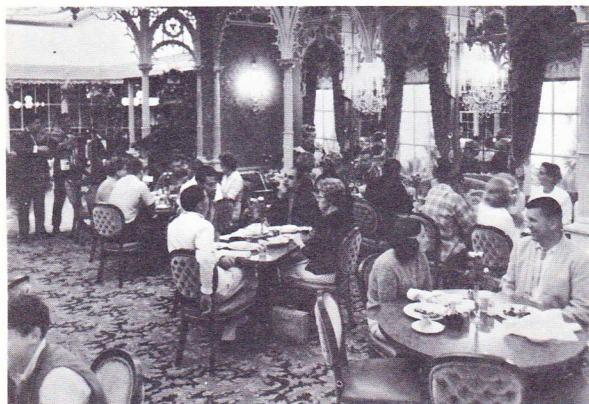
Carnation Ice Cream Parlor — Salads, sandwiches, beverages, sodas and fancy sundaes.

Carnation Plaza Gardens — Sandwiches, beverages, sundaes and ice cream.

Coke Refreshment Corner — Cokes and brownies.

Hills Bros. Coffee House and Garden — Breakfast menu, also hot and cold beverages, sandwiches and desserts.

Plaza Inn — Buffet service a la carte; luncheon, dinner, salads, chicken, roast beef, chopped sirloin steak, sea food and desserts. Children's portions available.



Plaza Pavilion — Buffeteria, luncheon, salads and Family style dinners. Chicken, fried shrimp, homemade pastries. Children's portions available.

Sunkist Citrus House — Fresh orange juice, lemonade, coffee, rolls, lemon tarts, frozen juice bars.

ADVENTURELAND

Sunkist, "I Presume" — Fresh orange juice, lemonade, donuts, coffee and jungle juleps.

Tahitian Terrace
— Waitress service.
Luncheon and dinner.
Authentic Polynesian specialties; sandwiches, salads, steaks, sea foods, and beverages—Children's portions available.



Tiki Juice Bar — Serving Tonga Fruit Punch.

NEW ORLEANS SQUARE



Blue Bayou Terrace
— Waitress service;
luncheon and dinner.
Serving sandwiches,
salads, sea foods,
chicken, beef and
desserts. Children's
portions available.

The French Market — Buffet a la carte: luncheon and dinner. Serving salads, hot meat sandwiches, sea foods and desserts. Children's portions available.

The Creole Cafe — Waitress service. Serving sandwiches, exotic coffee, French pastries and an array of ice cream parlor delicacies. New Orleans choux fritters.

The Mint Julep Bar — Non-alcoholic mint juleps and lemonade.

Royal Street Veranda — Fruit punch, frozen bananas, choux fritters.

FRONTIERLAND

Aunt Jemima's Kitchen — Plain and fancy pancakes, waffles, ham, bacon, sausage, eggs, beverages.

Casa De Fritos — Mexican food specialties, combination plates.

Shake and Sandwich Shop — Variety of milk shakes and wrapped sandwiches; self service.

Fort Wilderness Snack Bar — Coffee and cider.

Indian Village — Foot-long hot dogs, beverages, cookies.

Oaks Tavern — Chili, hamburgers, hot dogs, beverages.

Pepsi-Cola's Golden Horseshoe — Pepsi-Cola, sandwiches and chips.

Mark Twain Juice Bar — Sternwheelers (fruit punch).

FANTASYLAND

Character Food Stands — Hamburgers, hot dogs and beverages.

Pirate Ship — Tuna sandwiches, salads, hot tuna pie and beverages.

Welch's Grape Juice Bar — Pure grape juice and frozen juice bars.

TOMORROWLAND

Coca-Cola Tomorrowland Terrace — Cold sandwiches, salads, hamburgers, hot dogs and beverages.

The Space Bar — Beverages, popcorn and ice cream.

Shops and Stores

MAIN STREET, U.S.A.

Art Festival — Have your own pastel profile drawn in a few minutes.

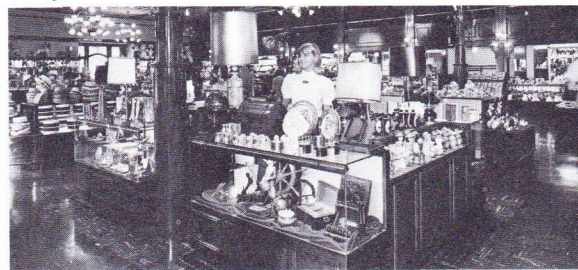
Camera Shop — Film and other photographic equipment. Twenty-four hour Kodak processing is available on your color slides and movies.

Candy Palace — For the most discriminating sweet tooth.

China Shop — Decorative accessories and gifts in ceramic and glass.

Crystal Arcade — Glass blower at work; and a **Book and Candle Shop**, with a wide selection of Walt Disney books, as well as candles from all over the world.

Emporium — Featuring a complete selection of gifts for the entire family.



Flower Market — Unusual man-made flowers and floral pieces.

Hallmark Communication Center — A complete display of Hallmark greeting cards, party packs and other paper items.

Jewelry Store — Large selection of specially-designed jewelry.

Mad Hatter Shop — Colorful variety of unique Disneyland hats.

Magic Shop — Unusual selection of tricks, masks, gadgets and souvenirs.

Market House — An old-fashioned general store complete with cider and dill pickles. Includes **C & H Sugar Corner**, featuring a variety of penny candies. Also, **Sunsweet Growers** displays a variety of dried fruits.

Silhouette Studio — Artists create and frame silhouettes while you wait.

Timex Watches — A complete display of Timex timepieces.

Tobacco Shop — Tobaccos and smoking accessories from around the world.

Wonderland Music Shop — Listening pleasure for every taste, including favorites from Disney films. Wide selection of player-piano rolls.

ADVENTURELAND

Adventureland Bazaar — Rare products and gifts from all over the world in a jungle atmosphere. Includes **GUATEMALAN WEAVERS**, **FAR EAST IMPORTS** and **MAGIC CARPET BAZAAR**.



Adventureland Traders — South Sea Island apparel and accessories in colorful assortment.

Tropical Imports — Hats, bags, shells and film.

NEW ORLEANS SQUARE

Mlle. Antoinette's Parfumerie — A complete line of select perfumes and the services of a perfumer to blend unique fragrances.

Bookstand — Souvenir periodicals and books.

Cristal d'Orleans — A room of glass, highlighted by glass cutting and engraving.

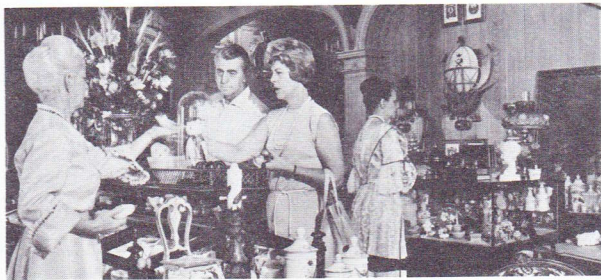
Le Forgeron — Shoppers can find all types of leaded glass and metal accessories for the home.

Le Gourmet — Unusual cooking and serving accessories available for purchase, along with a selection of exotic foods and spices.

Laffite's Silver Shop — Wide selection of silver gifts, combined with engraving facility for personalizing.

Marche aux Fleurs — Hats, accessories, film and cigarettes.

One-Of-A-Kind Shop — Exacting customers will find choice antiques, reproductions, and other unique gifts gathered from all parts of the world.



Portrait Artist — Artist does portrait in water colors.

FRONTIERLAND

Camera Shop — Complete line of film and processing mailers, cameras, and camera accessories.

Davy Crockett Arcade — Includes the MEXICAN SHOP; FRONTIERLAND HATS; the FRONTIER PRINT SHOP, with custom head-lined newspapers and stationery; a SOUVENIR STAND; and FRONTIER ROCK SHOP.

Frontier Trading Post — Western items, apparel and gifts. Film.

Indian Trading Post — A re-creation of an Indian store, featuring authentic Indian gifts.

Pendleton Woolen Mills Store — A complete selection of woolen fabrics and fashions for men, women, and children.

FANTASYLAND

Arts and Crafts — Features a unique selection of clocks, other imports and a glass blower.

Caricatures — Have your caricature made in minutes.

Castle Candy Shoppe — A variety of unusual candies.

Fantasy Gift Fair — Assorted gifts, toys for the young at heart.

Mad Hatter — Hats of every size, shape and color.

Merlin's Magic Shop — A medieval setting for a large selection of magic supplies and tricks, plus expert demonstration.

Souvenir Stands — Three outdoor stores with a selection of Disneyland souvenirs.

Tinkerbell Toy Store — Toys for children of all ages, also a complete doll shop.

TOMORROWLAND

Mad Hatter Shop — Colorful variety of unique Disneyland hats.

Souvenir Stand — Complete selection of Disneyland souvenirs.

The Character Shop — A wide selection of Disneyland souvenirs and other Disney merchandise. Film.

Free Exhibits

In addition to the many Disneyland adventures and attractions, you will enjoy visiting the outstanding free shows and exhibits sponsored by many nationally-famous companies for your enjoyment.

Eastman Kodak Exhibit — Free photo information and assistance.

INA's Carefree Corner — Disneyland's Official Information and Registration Center. Sign the guest book and pick up your complimentary copy of the Declaration of Independence when you leave the Park.

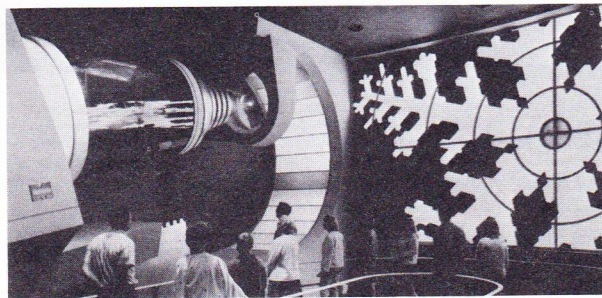
Market House — The General Store of Grandfather's day. C & H SUGAR CORNER features old-fashioned penny candy. SUNSWEET GROWERS displays a variety of dried fruits.

Upjohn Pharmacy — An accurate re-creation of an 1890-era drug store. Be sure to pick up free vitamins while visiting.

Bell System's America the Beautiful — A motion picture tour of America in an enlarged 360-degree theater. Also features the futuristic Picture-phone, where you can see the person you are calling.

General Electric's Carousel of Progress — Four life-like families trace the contributions of electricity to better living.

Monsanto's Adventure Thru Inner Space — A thrilling trip into the world of the atom.



Your Disneyland Entertainment Calendar

Effective 11/1/68 to 1/15/69

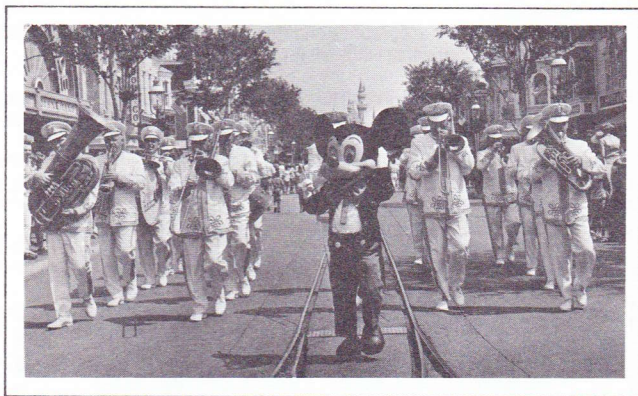
Disneyland Band — This popular 16 piece band performs for your enjoyment daily as follows:

10:45 AM - 11:05 AM — Main Street Parade and Town Square Concert.

11:20 AM - 12:15 PM — March throughout Disneyland, and concert on the Mark Twain Riverboat.

2:15 PM - 3:15 PM — Daily concert at Plaza Gardens.

5:25 PM - 5:45 PM — Main Street Parade and Retreat Ceremony.



Pepsi-Cola's Golden Horseshoe Revue — A way-out West vaudeville show with singing, dancing and comedy entertainment. 7 shows daily.

Coke Corner Pianist — Piano patter and song are featured in the 1890's atmosphere of Coke Corner's refreshment center.

Royal Street Bachelors — This trio of musicians perform in the balconies and quiet courtyards of New Orleans Square.

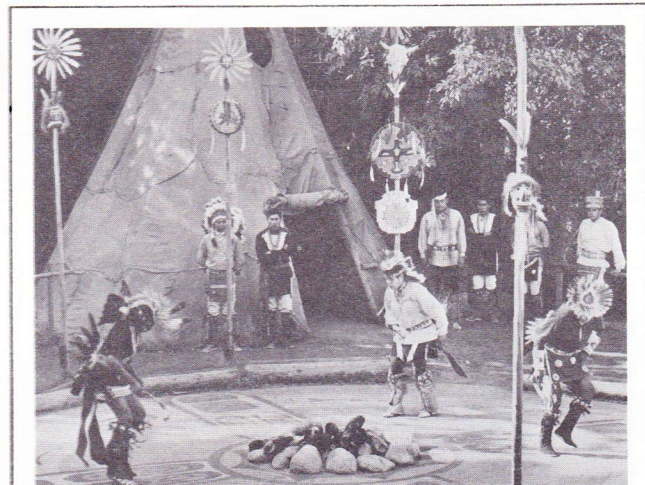
The Kids of the Kingdom — Sixteen talented young people sing and dance some of today's song standards on the Tomorrowland Stage.

Disney Characters — Mickey, Pluto, Goofy, Baloo, King Louie, Winnie the Pooh and Eeyore are on hand daily to greet guests and pose for pictures.

WEEKENDS AND HOLIDAYS

Dapper Daps — This popular barbershop quartet performs on Main Street, U.S.A. from 11:00 AM to 6:00 PM.

Hans and Otto — Two courageous mountain climbers scale the treacherous slopes of the mighty Matterhorn Mountain.



Indian Ceremonial Dancers — Indians perform authentic tribal dances in the Indian Village 14 times daily.

Delta Ramblers — Parading through New Orleans Square and performing at the French Market are these Dixieland favorites.

The Tomorrowland Terrace Group — a folk/rock group performs hourly on an elevating bandstand in Tomorrowland.

Shoeshine Boys — Teddy and Kenny are dancing and shining in New Orleans Square.

Plaza Inn Strings — Waltzes and smooth melodies are performed for your dining pleasure.

Blue Bayou Strings — Melodies in keeping with the "moonlit" atmosphere of the Blue Bayou Restaurant.

Character Parades — Saturday, Sunday and holidays, at 1 and 5:30 PM. 30 Disney characters, the Disneyland Band, and the Delta Ramblers, parade down Main Street, and through Fantasyland.

SPECIAL EVENTS

Thanksgiving Celebration — On Thursday, Friday and Saturday nights, November 28, 29 and 30, Disneyland will feature such outstanding groups as Bill Elliott and his Orchestra, The Mustangs, the Royal Tahitians, Young Men from New Orleans, and the Firehouse Five + 2, performing throughout the Park until midnight.



Christmas Holidays — Beginning December 21 and continuing through December 31, Disneyland will feature its Christmas special "Fantasy on Parade." Special evening entertainment will include Bill Elliott and his Orchestra, The Royal Tahitians, Young Men from New Orleans, The Mustangs, The Delta Ramblers and the Tomorrowland Terrace Group, performing nightly until midnight.

At various times throughout the Christmas Holidays, special guest appearances will be made by the official Rose Bowl Bands, plus visiting bands from out of state, who will be participating in the Tournament of Roses Parade.



New Year's Eve Party — A sparkling highlight of the Disneyland Winter Season is the world's biggest New Year's Eve Party (December 31). Guests can enjoy all of the Park's adventures and attractions (except shooting galleries) for six full hours from 8:00 PM until 2:00 AM, for one special admission price. Popular entertainment, dance bands, and special activities to "ring in" the New Year will be featured.